

completely reliant on volunteer support and Christchurch City Council funding.

To date, 7 projects have been successfully carried out since November 2010, at various locations across the city. Among these have been an outdoor performance and temporary garden at 832-834 Colombo St, an installation of photographs on a Worcester Boulevard site, a film and music event at 276 Colombo St, Beckenham, a fun fair at Addington, an improvised dance performance, an outdoor installation on a Ferry Rd by CPIT Architecture students, a petanque pitch at Lyttelton and more recently, a Book Exchange interactive installation.



242 Papanui Rd

Awarded in recognition of the renovation and revitalisation of a heritage building for complementary commercial use.

The Christchurch Civic Trust is pleased to award Working Style for its initiative and enterprise in bringing about the revitalisation of former house units at the corner of Papanui Rd and Murray Pl. Originally designed as a residence in 1939-40 by Heathcote Helmore, it is stylistically an amalgam of Neo Georgian and Art Deco. In the design renovation of the property, Working Style engaged Auckland Architect, Bridget Thornton and architectural advisor, Patrick Clifford.

Whilst 242 Papanui Rd has undergone a complete makeover, neither its interior nor exterior have been compromised.

Working Style is an Auckland-based tailoring



242 Papanui Rd from Murray Place

company with branches elsewhere New Zealand and now in Christchurch. It is one of the first firms, following the 2010 and 2011 earthquakes, from outside Christchurch to commit to the city.

COMMENDATION AWARD

Grange Guest House 56 Armagh St

Commended for the ongoing care of an important heritage house and for maintaining a complementary commercial use.



Grange Guest House 56 Armagh St

The Christchurch Civic Trust is pleased to commend the current owners Des and Tracey Ramsey, for their commitment and care of an important inner city heritage house.

The eight room, two storey house at 56 Armagh St (formerly 247), is listed Category II and has been sensitively restored to maintain both its interior and exterior heritage features.

It was originally the home of the Reverend James West Stack [1835 -1919], missionary, writer and local European authority on Maori.

Stack was born in a Maori pa in the Thames

district, where his father was a missionary. In 1846 he attended school at St John's College, Auckland, but in 1847 left with his family to return to England. Stack eventually became a teacher with the Church Missionary Society in London.

In 1859 he accepted an invitation from Bishop Henry Harper to take up the work of the newly founded Maori mission of the diocese of Christchurch. The mission house, church and school were sited at Tuahiwi. When in May 1870 the mission house was lost in a fire, there were no funds to rebuild it.

The Stack family eventually moved to Christchurch in 1874, to a house built on church land in Armagh St.

After retiring from the Maori mission in 1894, Stack became an honorary canon of Christchurch Cathedral. In 1898 he and his wife left New Zealand. He died in 1919.

The next owner of 56 Armagh St was Dr William Irving, who was born in England, the son of Dr James Irving and came to New Zealand in 1879 with his parents and 8 siblings.

After receiving his formative education in

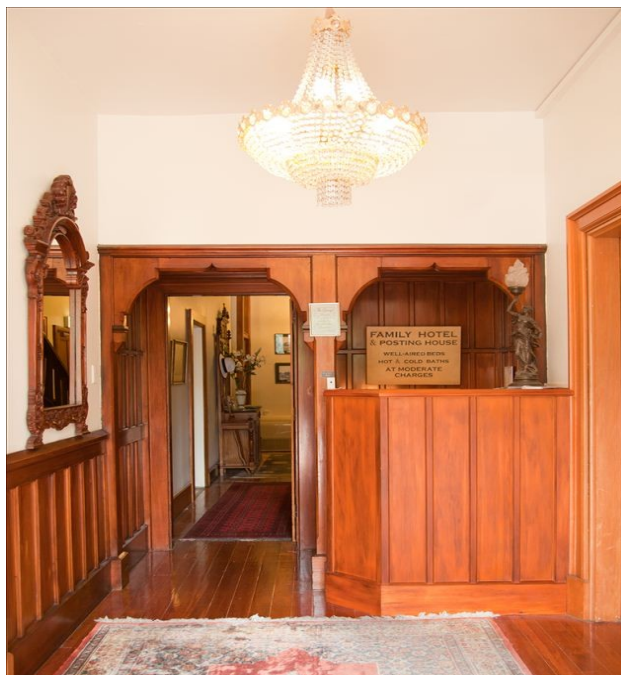
Christchurch, Irving did his medical training and completed his qualifications in London. He returned to Christchurch in 1896 and was registered as a New Zealand medical practitioner in 1898.

Following his marriage in 1900, he set up practice and residence at 56 Armagh St as a consulting physician and was a prominent city doctor up until his death in 1932.

The house was then bought by Dr Francis (Oswald) Bennett [1898 -1976]. Bennett was born in Christchurch and from an early age desired to become a writer. However, he chose medicine as his career and in 1917 began his medical studies at Otago Medical School, but not long after, enlisted to serve in WWI. Following his military service, Bennett resumed his medical studies completing his MB and Ch B in 1925.

After time practicing in the North Island and on the West Coast Bennett returned to Christchurch and in 1933, took over Irving's practice which he retained until his death in 1976.

In the years that followed, the property went through a succession of owners until it was renovated for guest house accommodation about 20 years ago.



Grange Guest House Entry Reception

The current owners, Des and Tracey Ramsey have developed Grange House and added motels to the property since taking it over in 2000.

Although the house sustained some interior damage as a result of recent earthquakes, this will be dealt with in the months ahead.

Presentation of the

CHRISTCHURCH CIVIC TRUST

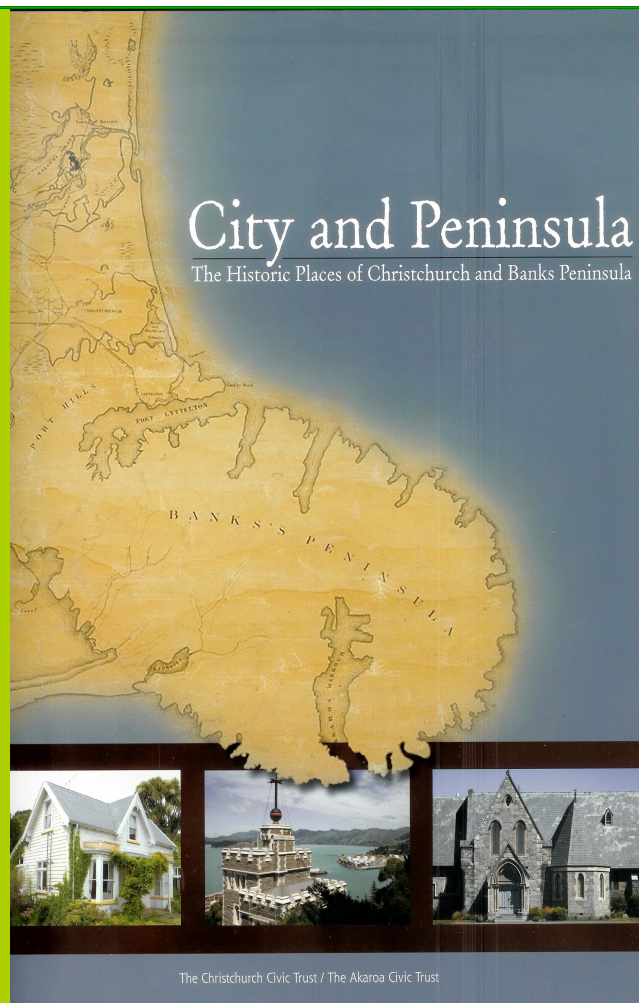
AWARDS 2011

Members are invited to attend the
Christchurch Civic Trust annual awards to
be held in the Browne Room at the
Christchurch Horticultural Centre Hall
57 Riccarton Avenue

Wednesday 16 November

commencing at 5.30

Funded with the support of
Canterbury Community Trust



A New Edition Now Available

City and Peninsula

The Historic Places of Christchurch and Banks Peninsula

Authored by noted heritage historian John Wilson, and published collaboratively by The Christchurch Civic Trust and Akaroa Civic Trust, this book provides an excellent introduction to both the rural and urban heritage assets of Christchurch and Banks Peninsula.

200pp with over 290 full colour illustrations

Available from The Christchurch Civic Trust PO Box 1927 Christchurch.

for \$50+ \$10 postage and packaging.

THE CHRISTCHURCH CIVIC TRUST EVENTS CALENDAR

2011	November	16	Civic Trust Awards
	December	06	
2012	February	07	Trust Board Meeting
	March	06	Trust Board Meeting

The Trust Board

Chairman: Neil Roberts

Secretary: Tim Hogan

Treasurer: Lindsay Carswell

Vivienne Bishop, Valerie Campbell, Ian Clark, Anne Dingwall, Rosanne Harwarden, Chris Kissling, (Deputy Chair) Joanna Mackenzie, Penny Orme, Jacqueline Smith, David Thornley and Prue Wignall.

Contacts: The Secretary, 366 3322

The Chairman, 377 1435

The Christchurch Civic Trust P.O.Box 1927 Christchurch 8041

www.christchurchcivictrust.com.nz

The views expressed in this publication are not necessarily those of the Christchurch Civic Trust
